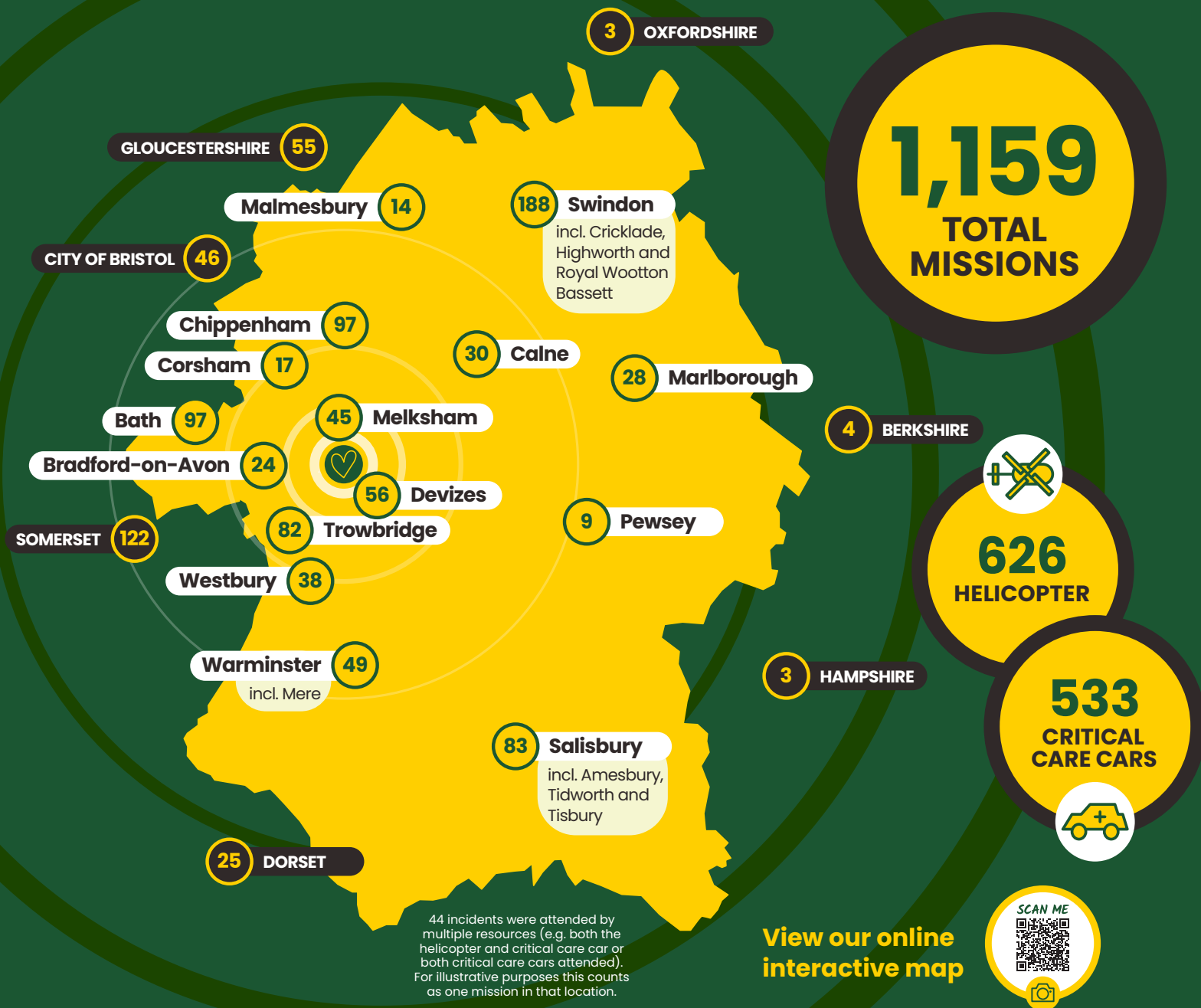


# Mission Report

1 JAN — 31 DEC 2025



## Mission breakdown

	<b>283</b>	Cardiac emergencies
	<b>273</b>	Medical conditions
	<b>181</b>	Road traffic collisions
	<b>179</b>	Falls
	<b>53</b>	Sporting incidents

### Top hospitals we airlifted or assisted patients to...

<b>99</b>	Royal United • Bath
<b>93</b>	Southmead • Bristol
<b>46</b>	Great Western • Swindon